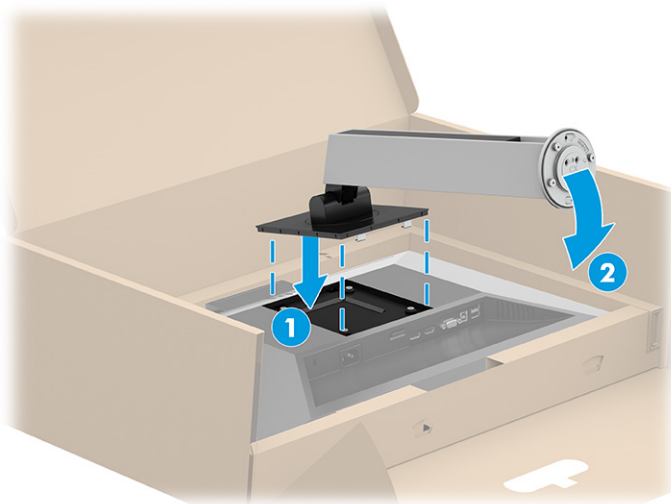


1. With the monitor placed facedown inside the box, tear open the packaging bag along the tear line.

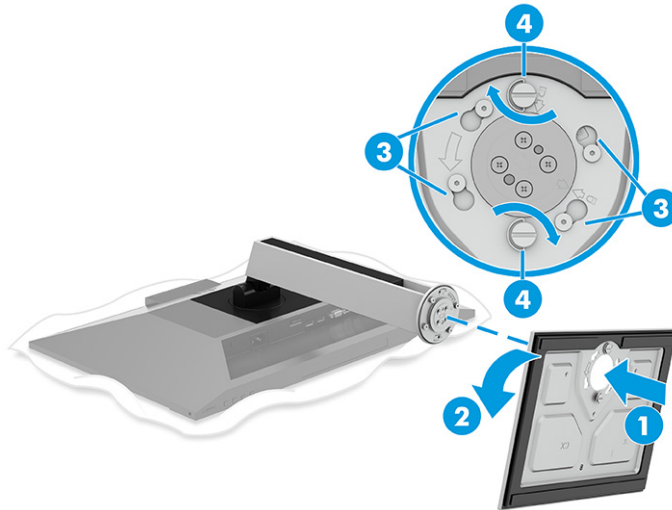


2. Slide the top of the mounting plate on the stand under the upper lip of the recess in the back of the panel (1).



3. With the monitor still placed facedown inside the box, insert the base into the bottom of the monitor stand (1), and then swivel the base counterclockwise to lock it in place (2). Confirm that the arrow on

the monitor stand is aligned with the arrow on the bottom of the base (3), and then tighten the two thumbscrews into the base (4).



## Mounting the monitor head

To attach your monitor to a wall using a swing arm or other mounting fixture, follow the steps in this section to safely and securely connect your monitor.

**IMPORTANT:** This monitor supports the VESA industry-standard 100 mm mounting holes. To attach a third-party mounting solution to the monitor head, use four 4 mm, 0.7 pitch, and 10 mm long screws. Longer screws might damage the monitor. Be sure that the manufacturer's mounting solution is compliant with the VESA standard and is rated to support the weight of the monitor head. For best performance, use the power and video cables provided with the monitor.

**NOTE:** This apparatus is intended to be supported by a UL-listed or CSA-listed wall-mount bracket.

## Removing the monitor stand

If you decide to use a wall mount instead of the monitor stand that you attached, first remove the stand.

**IMPORTANT:** Before you disassemble the monitor, be sure that the monitor is turned off and all cables are disconnected.

**IMPORTANT:** To position and stabilize the monitor, HP recommends that two people perform these procedures.

1. Disconnect and remove all cables from the monitor.
2. Position the monitor facedown on a flat surface covered by protective sheet made of foam or a clean, dry cloth.
3. Push up the latch near the bottom center of the stand's mounting plate (1).
4. Swing the bottom of the stand up until the mounting plate clears the recess in the monitor head (2).